
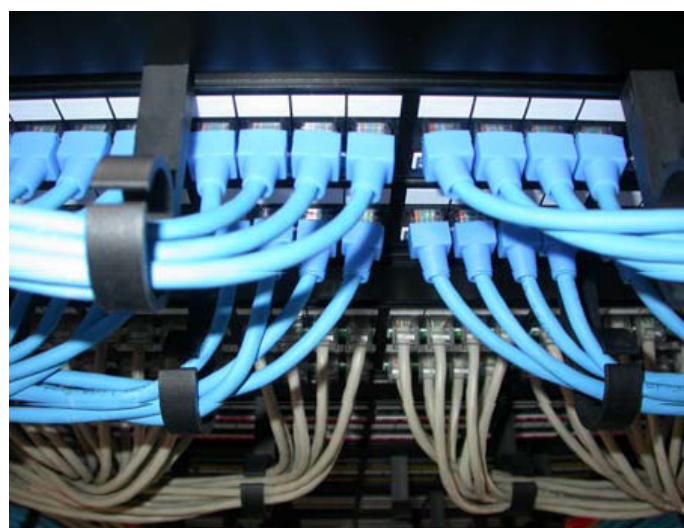


Project Scope Overview	
Customer:	Technology House - Central London
Installer:	Technology House IT Solutions Ltd 
Site Location:	Central London
Requirements:	<ul style="list-style-type: none"> • 1150 Unshielded Twisted Pair outlets in total • 634 Multimode Duplex fibre outlets to the desk • Multimode backbone fibre links between floors • Multicore voice backbone links between floors
Equipment:	Dual LAN; Copper Cat 5 E and Multi-mode OM3 fibre

“Technology House really pulled this project out of the bag as they were introduced very late in the programme. They were up against it from the offset as timescales were extremely tight and the phasing of the project meant that certain areas had to be operational very quickly. They showed true professionalism in their approach and filled me with confidence from the moment I met them, I can’t thank them enough”.

ICT Project Manager



The secure and non secure network Cat5 patch panels

Project Summary

This project was made more difficult due to the architecture of the building; a series of windows running around the entire floors hampered the installation of the cabling. A false ceiling was installed to allow all services to be routed out of sight and perimeter trunking was employed to present the RJ45 outlets and duplex fibre outlets. The project had to be phased in to allow the minimum of disruption to the client’s operations, and personnel were being relocated as works were still underway. The design of the infrastructure had to allow for the denial of access to designated areas whilst operations had to continue during all phases of the installation.

Project Brief

The operations of our client were spread across two floors of a Central London location. Due to the nature of their business they had a requirement for a secure and a non-secure LAN to which most users would have access. Category 5e UTP was installed for the non-secure network whilst Multimode fibre was utilised to provide a secure media for the more sensitive network. The TER (Terminal Equipment Room) was located on one of the two floors to which Multimode fibre and Multicore voice cabling was installed to distribute the LANs and telephony circuits to remote cabinet positions.



Central London location